

Performance Report for: <https://4animalshop.it/>

Report generated: Wed, Jun 16, 2021 8:44 AM -0700
 Test Server Location: London, UK
 Using: Chrome (Desktop) 90.0.4430.212, Lighthouse 7.4.0



Top Issues

IMPACT	AUDIT	
Med	Serve static assets with an efficient cache policy	Potential savings of 1.11MB
Med-Low	Eliminate render-blocking resources	Potential savings of 264ms
Med-Low	Avoid an excessive DOM size	1,332 elements
Med-Low	Use a Content Delivery Network (CDN)	12 resources found
Low	Enable text compression	Potential savings of 211KB

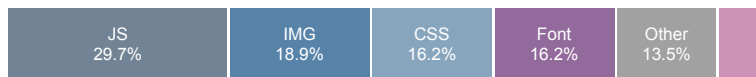
Page Details



Total Page Size - 2.12MB



Total Page Requests - 37



How does this affect me?

Today's web user expects a fast and seamless website experience. Delivering that fast experience can result in increased visits, conversions and overall happiness.

As if you didn't need more incentive, **Google has announced that they are using page speed in their ranking algorithm.**

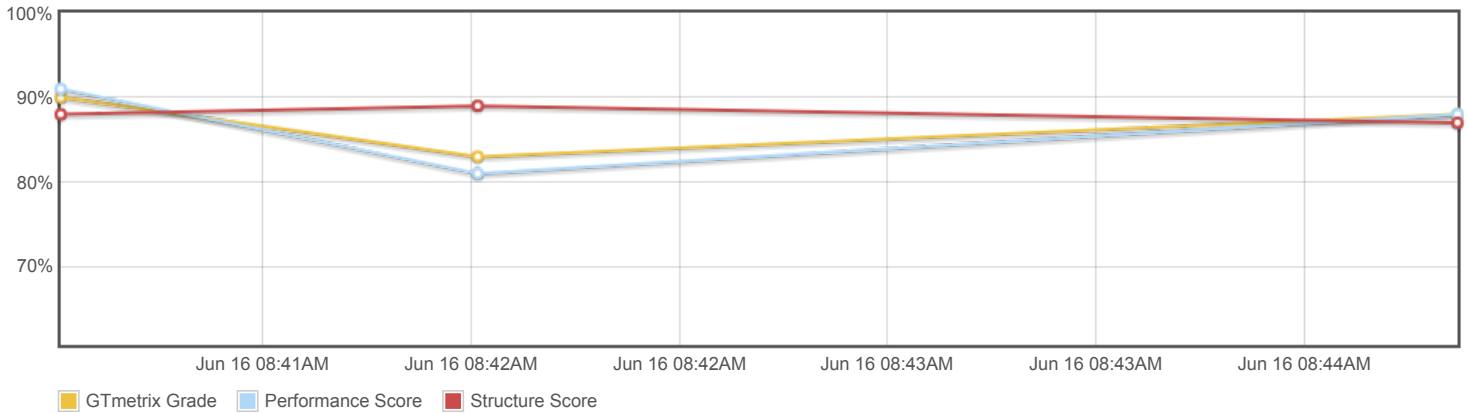
About GTmetrix

GTmetrix is developed by the good folks at **CARBON60**, a Canadian hosting company with over 25 years experience in web technology.

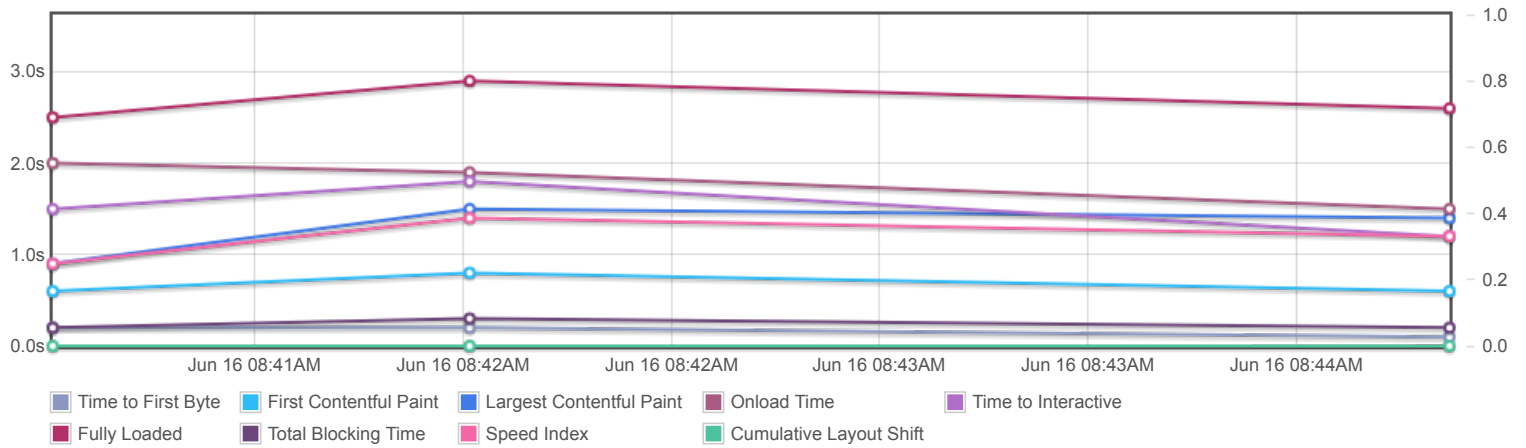


<https://carbon60.com/>

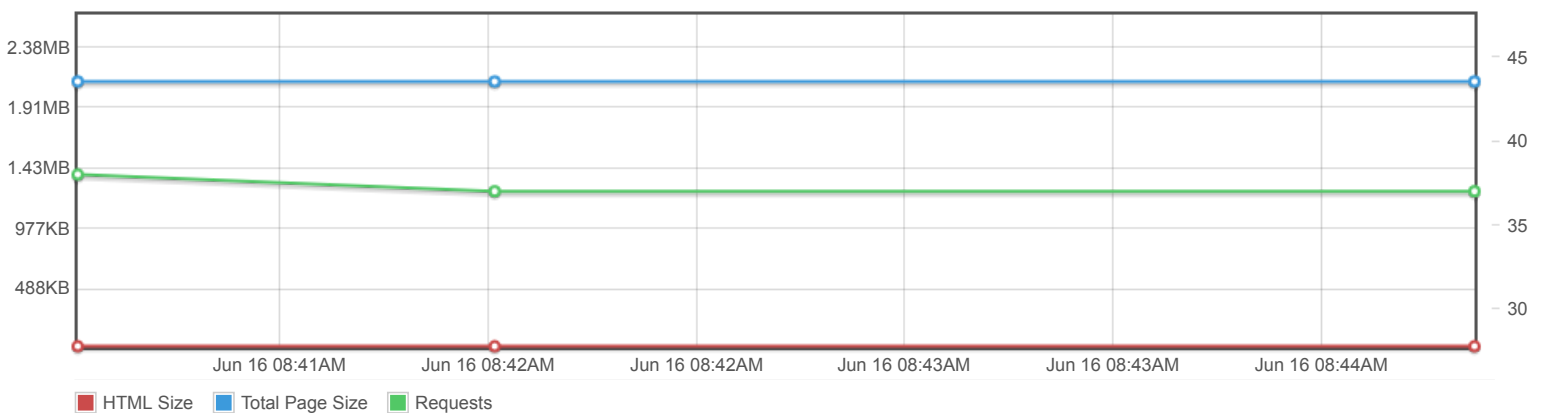
Page scores



Page metrics

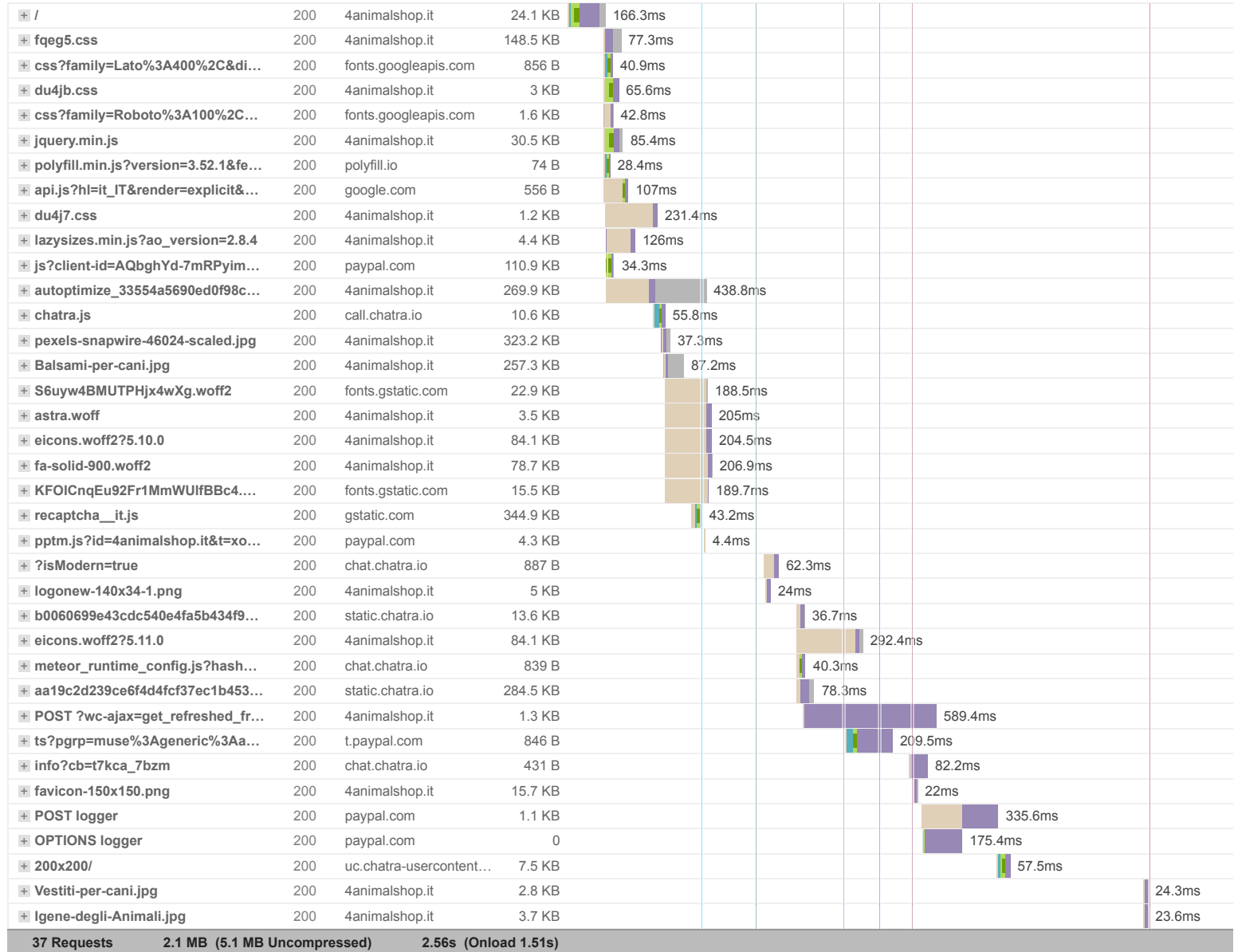


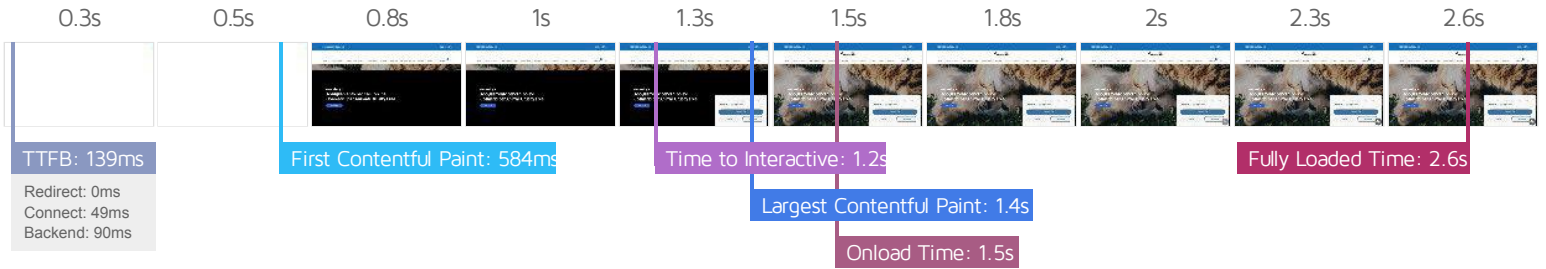
Page sizes and request counts



The waterfall chart displays the loading behaviour of your site in your selected browser. It can be used to discover simple issues such as 404's or more complex issues such as external resources blocking page rendering.

Abbigliamento per cani online - Cosmetici per Animali Cruelty Free





Performance Metrics

<p>First Contentful Paint</p> <p>How quickly content like text or images are painted onto your page. A good user experience is 0.9s or less.</p>	<p>Good - Nothing to do here</p> <p>583ms</p>	<p>Time to Interactive</p> <p>How long it takes for your page to become fully interactive. A good user experience is 2.5s or less.</p>	<p>Good - Nothing to do here</p> <p>1.2s</p>
<p>Speed Index</p> <p>How quickly the contents of your page are visibly populated. A good user experience is 1.3s or less.</p>	<p>Good - Nothing to do here</p> <p>1.2s</p>	<p>Total Blocking Time</p> <p>How much time is blocked by scripts during your page loading process. A good user experience is 150ms or less.</p>	<p>Longer than recommended</p> <p>244ms</p>
<p>Largest Contentful Paint</p> <p>How long it takes for the largest element of content (e.g. a hero image) to be painted on your page. A good user experience is 1.2s or less.</p>	<p>OK, but consider improvement</p> <p>1.4s</p>	<p>Cumulative Layout Shift</p> <p>How much your page's layout shifts as it loads. A good user experience is a score of 0.1 or less.</p>	<p>Good - Nothing to do here</p> <p>0</p>

Browser Timings

Redirect	0ms	Connect	49ms	Backend	90ms
TTFB	139ms	First Paint	584ms	DOM Int.	606ms
DOM Loaded	819ms	Onload	1.5s	Fully Loaded	2.6s

IMPACT	AUDIT	
Med	Serve static assets with an efficient cache policy	Potential savings of 1.11MB
Med-Low	Eliminate render-blocking resources	Potential savings of 264ms
Med-Low	Avoid an excessive DOM size	1,332 elements
Med-Low	Use a Content Delivery Network (CDN)	12 resources found
Low	Enable text compression	Potential savings of 211KB
Low	Reduce unused JavaScript	Potential savings of 510KB
Low	Use HTTP/2 for all resources	Potential savings of 180ms
Low	Avoid enormous network payloads	Total size was 2.12MB
Low	Reduce JavaScript execution time	482ms spent executing JavaScript
Low	Reduce unused CSS	Potential savings of 142KB
Low	Serve images in next-gen formats	Potential savings of 86.9KB
Low	Ensure text remains visible during webfont load	3 fonts found
Low	Avoid long main-thread tasks	6 long tasks found
Low	Reduce initial server response time	Root document took 90ms
Low	Avoid serving legacy JavaScript to modern browsers	Potential savings of 11.3KB
Low	Defer offscreen images	Potential savings of 257KB
Low	Avoid large layout shifts	5 elements found
Low	Avoid non-composited animations	1 animated element found
Low	Avoid chaining critical requests	10 chains found
N/A	Largest Contentful Paint element	1 element found
N/A	Minimize main-thread work	Main-thread busy for 1.3s
N/A	User Timing marks and measures	4 user timings

N/A

Reduce the impact of third-party code

Total size was 508KB